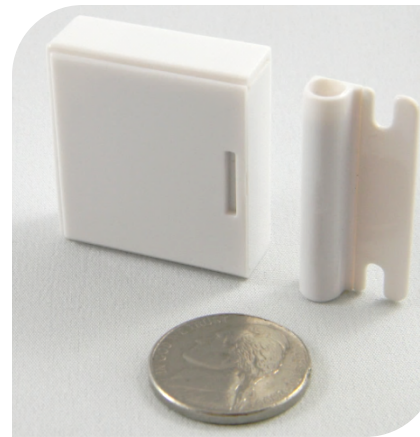
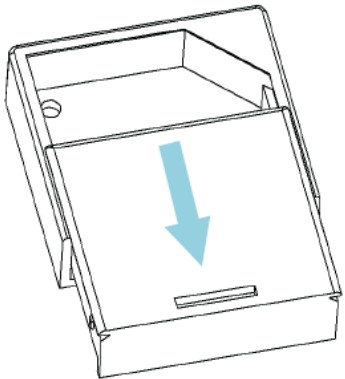




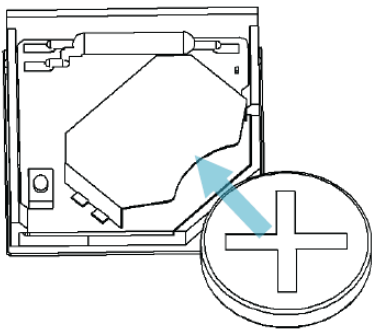
# DOOR/WINDOW SENSOR INSTALLATION GUIDE



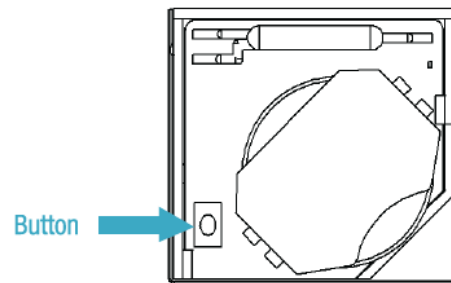
## STEP 1: INSTALL BATTERY



Slide open the Door/Window Sensor's top housing. Install the CR2032 battery in the housing top as shown below.



## STEP 2: JOIN THE NETWORK



**Users:**  
Refer to the instructions on your web portal or smart phone application to join and configure the Door/Window Sensor.

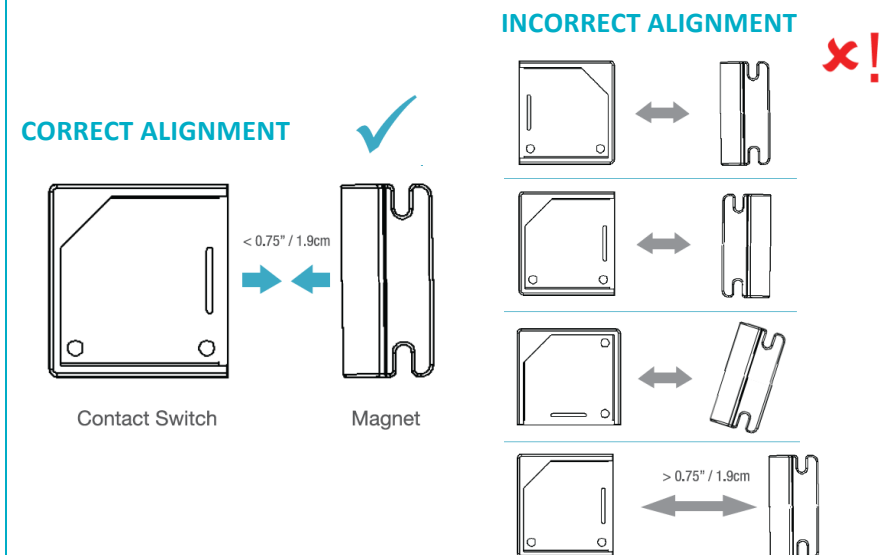
**Developers:**  
Refer to NYCE'S "ZigBee Device Messaging Specification" document for details on how to join the Door/Window Sensor to the ZigBee network.

This document can be found on NYCE's Website Support page: [www.nycesensors.com/support/](http://www.nycesensors.com/support/)

## STEP 3: PROPER DEVICE ORIENTATION

Ensure that the Door/Window Sensor and the Magnet are facing each other as shown in the diagram below on the left. The Magnet and Sensor can be a **maximum of 0.75" (1.9 cm) apart**. If aligned properly, you will be able to hear a 'click' when they approach.

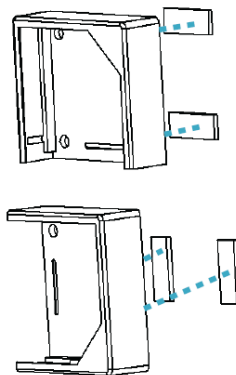
Check that the icon on your web portal or smart phone application updates with a "Closed" and "Open" icon as the magnet is moved to and from the device.



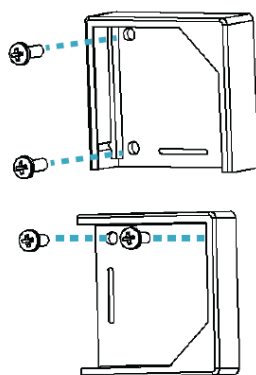
## STEP 4: INSTALL THE SENSOR HOUSING

Using the methods shown below, install the Sensor bottom housing on a clean surface.

### OPTION 1: 2-SIDED TAPE



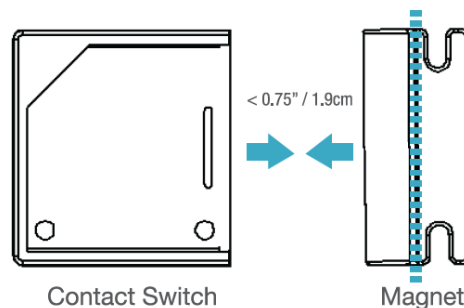
### OPTION 2: SCREWS



**Notes:** Test the Sensor from desired location before permanent installation. Installation on metal can reduce transmission range. Ensure that the device is installed in a dry location away from water, moisture, and rain.



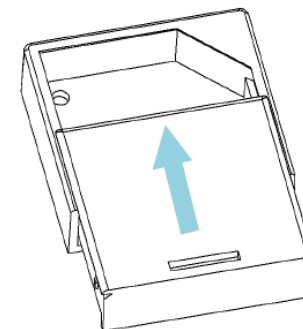
## STEP 5: INSTALL THE MAGNET



Install the magnet in the proper orientation using 2-sided tape or screws. The magnet must be within 0.75" (1.9 cm) of the Sensor.

If using 2-sided tape, the magnet's tab can be removed by snapping the screw tab along the scored line shown above.

## STEP 6: INSTALL THE SENSOR



Once you have confirmed the device is communicating, insert the sensor top housing as shown above

## PRODUCT FUNCTION AND LED INDICATORS

BUTTON	LED	ACTION	LED	DESCRIPTION
2 TIMES	●●	NETWORK STATUS	●●●● ●●●● ●●●●	JOINED NOT JOINED RE-JOIN IN PROCESS
4 TIMES	●●●●	NETWORK JOIN	●●●● ●●●● ●●●● ●●●●	SEARCHING FOR NETWORK DEVICE BEING CONFIGURED DEVICE JOINED DEVICE FAILED TO JOIN
8 TIMES	●●●●●●●●	FORCED RE-JOIN	●●●●	RE-JOIN, SEARCHING FOR PARENT
10 TIMES	●●●●●●●●●●	NETWORK LEAVE AND DEFAULT	●●●● ●●●●●●●●	LEAVE (IF JOINED) AND DEFAULTS RESTORED
		NO ACTION	● ●●●●	WRONG BUTTON PRESS DEVICE BUSY
		POWER UP	●●●●●●●●	

